

INNERE

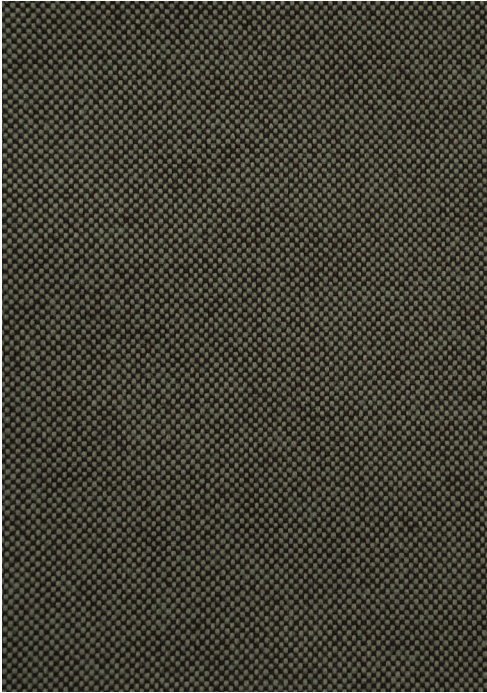
**LISBOA**

Coleção Trevira CS

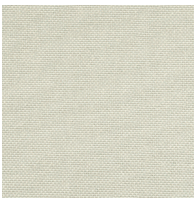
*Trevira CS collection*

# LISBOA

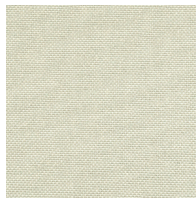
Trevira CS



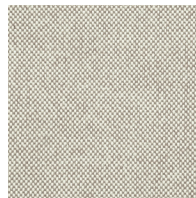
01146008



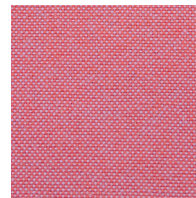
01146011



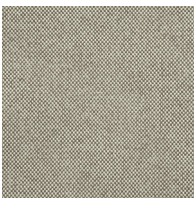
01146010



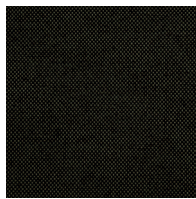
01146009



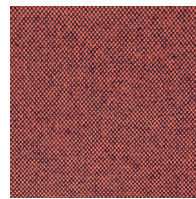
01146001



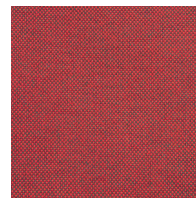
01146007



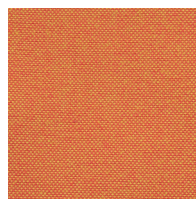
01146006



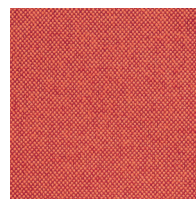
01146003



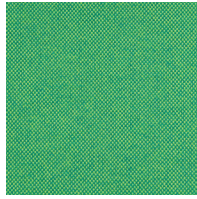
01146002



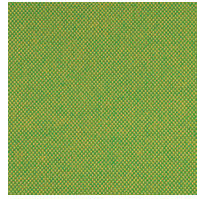
01146005



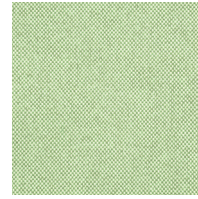
01146004



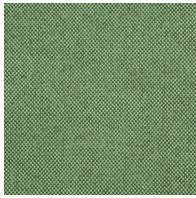
01146019



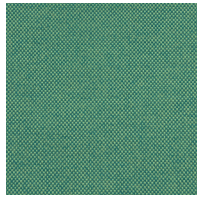
01146023



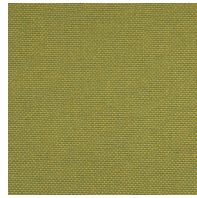
01146022



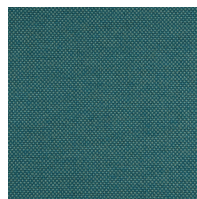
01146021



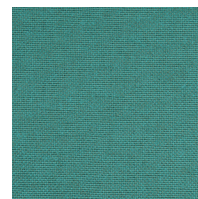
01146020



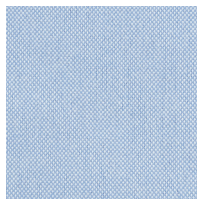
01146024



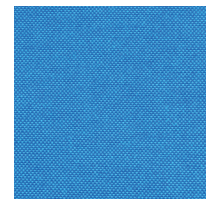
01146018



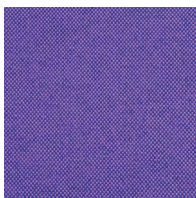
01146017



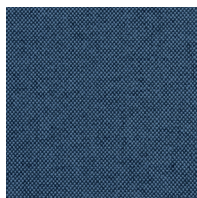
01146015



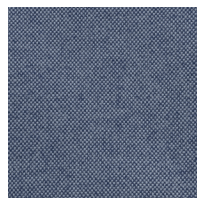
01146016



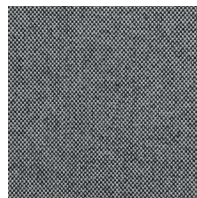
01146012



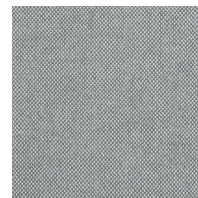
01146013



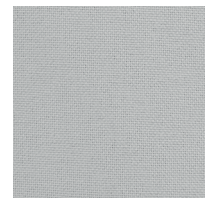
01146014



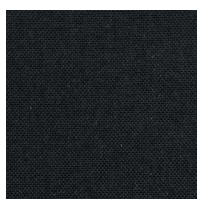
01146027



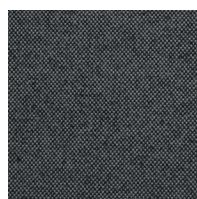
01146026



01146025



01146029



01146028



**Composição**  
100% Poliéster - Trevira CS  
As propriedades ignífugas são intrínsecas à fibra

**Peso**  
365 ± 5% g/ml  
260 ± 5% g/m<sup>2</sup>

**Largura**  
140 ± 2% cm

**Resistência à abrasão (Martindale)**  
UNI EN ISO 12947/2  
70.000 ± 10% ciclos

**Borboto**  
UNI EN ISO 12945/2  
5 (foto standard)  
Tolerância: de 4 a 5

**Solidez à luz**  
UNI EN ISO 105-B02  
6 (escala de azuis)  
Tolerância: de 5 a 8

**Solidez à fricção**  
UNI EN ISO 105-X12  
4/5 (escala de cinzentos)  
Tolerância: de 4 a 5

**Classe ignífuga**  
UNI 9174-8456 Class C1  
DIN 4102 Class B1  
NF 92501-7 Class M1  
BS 5852 Crib 5  
EN 1021-1  
EN 1021-2  
IMO Res. A 652 (16) Part 8  
IMO Res. A 471 (XII) Part 7  
BS 7176 Medium Hazard  
NF D 60013 Class AM 18

O grau de resistência ao fogo depende da espuma utilizada

**Cor**  
Poderão existir variações de cor entre os diferentes lotes dentro do padrão estabelecido comercialmente

**Manutenção e limpeza**



**Garantia**  
De acordo com termos e condições de garantia de fábrica.

**Composition**  
100% Polyester - Trevira CS  
The flame retardant properties are inherent to the fibre

**Weight**  
365 ± 5% g/ml  
260 ± 5% g/m<sup>2</sup>

**Width**  
140 ± 2% cm

**Abrasion resistance (Martindale)**  
UNI EN ISO 12947/2  
70.000 ± 10% rubs

**Pilling**  
UNI EN ISO 12945/2  
5 (standard photos)  
Tolerance: from 4 to 5

**Light fastness**  
UNI EN ISO 105-B02  
6 (blue scale)  
Tolerance: from 5 to 8

**Fastness to rubbing**  
UNI EN ISO 105-X12  
4/5 (grey scale)  
Tolerance: from 4 to 5

**Flammability**  
UNI 9174-8456 Class C1  
DIN 4102 Class B1  
NF 92501-7 Class M1  
BS 5852 Crib 5  
EN 1021-1  
EN 1021-2  
IMO Res. A 652 (16) Part 8  
IMO Res. A 471 (XII) Part 7  
BS 7176 Medium Hazard  
NF D 60013 Class AM 18

Flame retardant performance is dependant upon the foam used

**Colour**  
Batch to batch colour variations may occur within commercial tolerances

**Cleaning and washing**



**Guarantee**  
According to the factory's terms and conditions of guarantee.