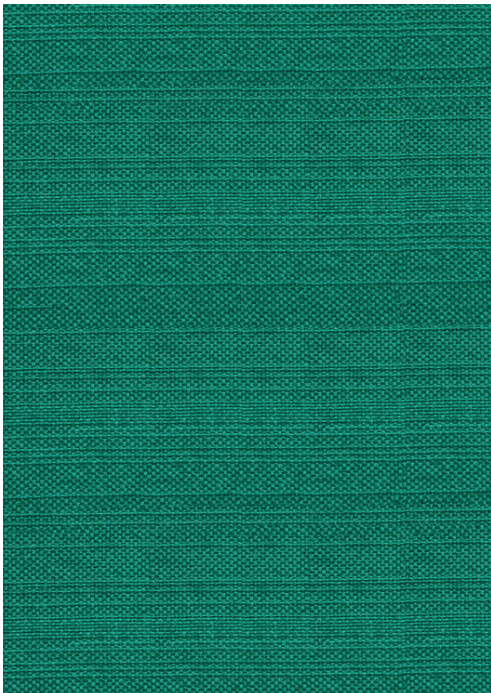


INNERE

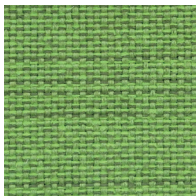
**NEIVA**

Coleção Trevira CS

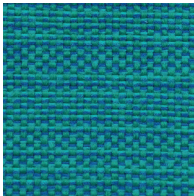
*Trevira CS collection*



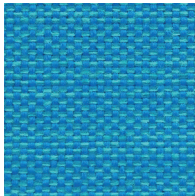
01145018



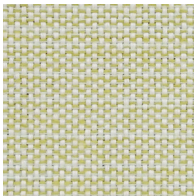
01145020



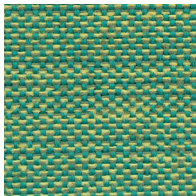
01145017



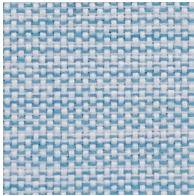
01145016



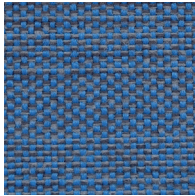
01145019



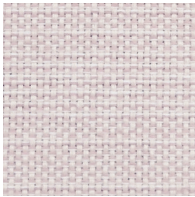
01145021



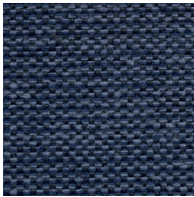
01145013



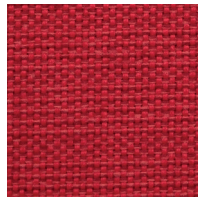
01145014



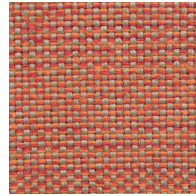
01145012



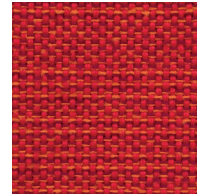
01145015



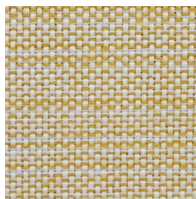
01145003



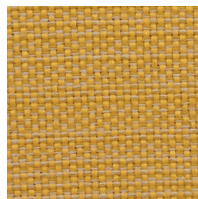
01145001



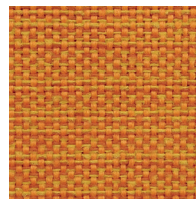
01145002



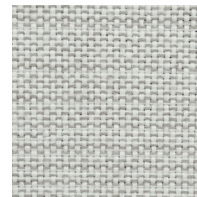
01145006



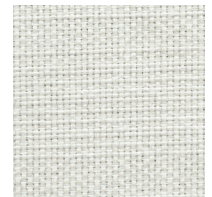
01145005



01145004



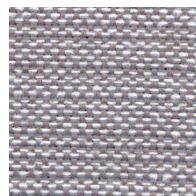
01145007



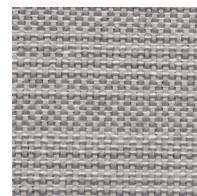
01145008



01145011



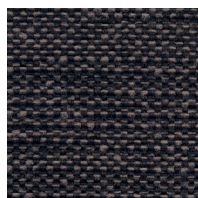
01145024



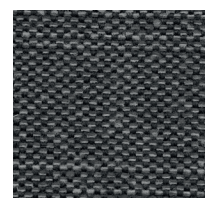
01145023



01145009



01145010



01145022



01145025



**Composição**  
100% Poliéster - Trevira CS  
As propriedades ignífugas são  
intrínsecas à fibra

**Peso**  
590 ± 5% g/ml  
420 ± 5% g/m<sup>2</sup>

**Largura**  
140 ± 2% cm

**Resistência à abrasão (Martindale)**  
UNI EN ISO 12947/2  
100.000 ± 10% ciclos

**Borboto**  
UNI EN ISO 12945/2  
5 (foto standard)  
Tolerância: de 4 a 5

**Solidez à luz**  
UNI EN ISO 105-B02  
6 (escala de azuis)  
Tolerância: de 5 a 8

**Solidez à fricção**  
UNI EN ISO 105-X12  
4/5 (escala de cinzentos)  
Tolerância: de 4 a 5

**Classe ignífuga**  
UNI 9174-8456 Class C1  
DIN 4102 Class B1  
NF 92501-7 Class M1  
BS 5852 Crib 5  
EN 1021-1  
EN 1021-2  
IMO Res. A 652 (16) Part 8  
IMO Res. A 471 (XII) Part 7  
BS 7176 Medium Hazard  
NF D 60013 Class AM 18

O grau de resistência ao fogo  
depende da espuma utilizada

**Cor**  
Poderão existir variações de cor entre  
os diferentes lotes dentro do padrão  
estabelecido comercialmente

**Manutenção e limpeza**



**Garantia**  
De acordo com termos e condições  
de garantia de fábrica.

**Composition**  
100% Polyester - Trevira CS  
The flame retardant properties are  
inherent to the fibre

**Weight**  
590 ± 5% g/ml  
420 ± 5% g/m<sup>2</sup>

**Width**  
140 ± 2% cm

**Abrasion resistance (Martindale)**  
UNI EN ISO 12947/2  
100.000 ± 10% rubs

**Pilling**  
UNI EN ISO 12945/2  
5 (standard photos)  
Tolerance: from 4 to 5

**Light fastness**  
UNI EN ISO 105-B02  
6 (blue scale)  
Tolerance: from 5 to 8

**Fastness to rubbing**  
UNI EN ISO 105-X12  
4/5 (grey scale)  
Tolerance: from 4 to 5

**Flammability**  
UNI 9174-8456 Class C1  
DIN 4102 Class B1  
NF 92501-7 Class M1  
BS 5852 Crib 5  
EN 1021-1  
EN 1021-2  
IMO Res. A 652 (16) Part 8  
IMO Res. A 471 (XII) Part 7  
BS 7176 Medium Hazard  
NF D 60013 Class AM 18

Flame retardant performance is  
dependant upon the foam used

**Colour**  
Batch to batch colour variations may  
occur within commercial tolerances

**Cleaning and washing**



**Guarantee**  
According to the factory's terms and  
conditions of guarantee.