

INNERE

**SINTRA**

Coleção Trevira CS

*Trevira CS collection*

# SINTRA Trevira CS



01150001



01150013



01150014



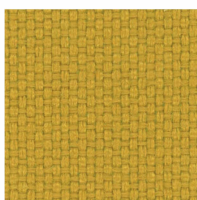
01150015



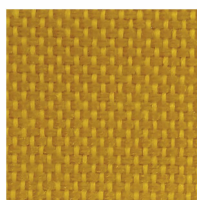
01150010



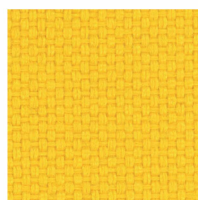
01150011



01150007



01150008



01150009



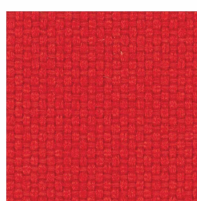
01150016



01150012



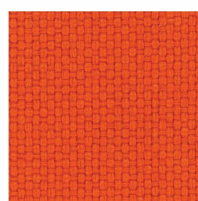
01150002



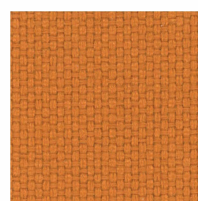
01150003



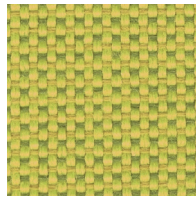
01150004



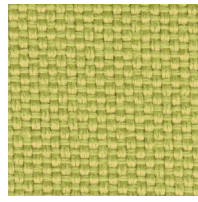
01150005



01150006



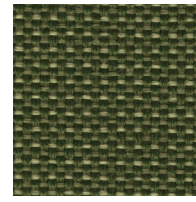
01150038



01150037



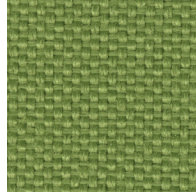
01150040



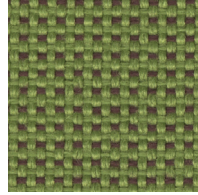
01150041



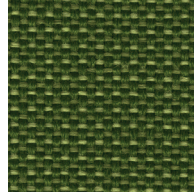
01150042



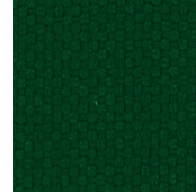
01150034



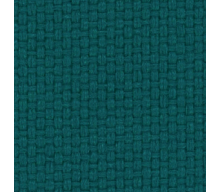
01150035



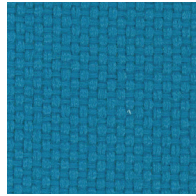
01150036



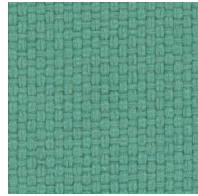
01150039



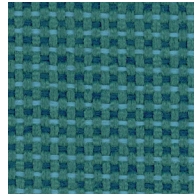
01150033



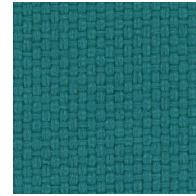
01150026



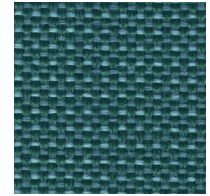
01150029



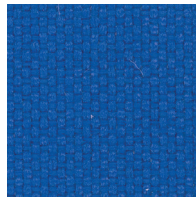
01150031



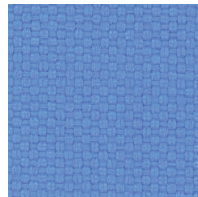
01150030



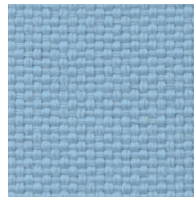
01150032



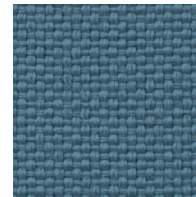
01150028



01150027



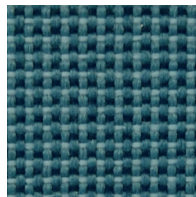
01150024



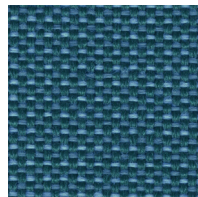
01150025



01150023



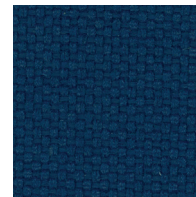
01150020



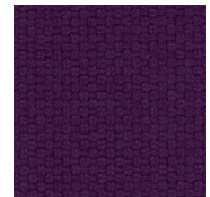
01150022



01150021



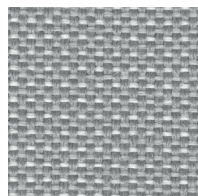
01150019



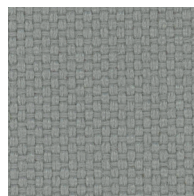
01150017



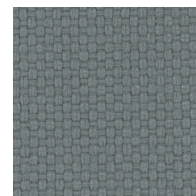
01150044



01150045



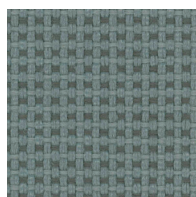
01150046



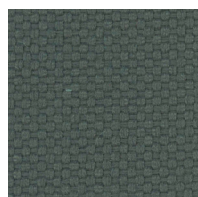
01150043



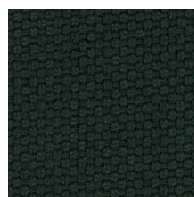
01150018



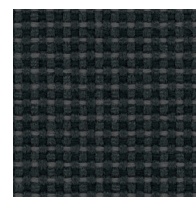
01150047



01150048



01150049



01150050



01150051



**Composição**  
100% Poliéster - Trevira CS  
As propriedades ignífugas são  
intrínsecas à fibra

**Peso**  
365 ± 5% g/ml  
260 ± 5% g/m<sup>2</sup>

**Largura**  
140 ± 2% cm

**Resistência à abrasão (Martindale)**  
UNI EN ISO 12947/2  
70.000 ± 10% ciclos

**Borboto**  
UNI EN ISO 12945/2  
5 (foto standard)  
Tolerância: de 4 a 5

**Solidez à luz**  
UNI EN ISO 105-B02  
6 (escala de azuis)  
Tolerância: de 5 a 8

**Solidez à fricção**  
UNI EN ISO 105-X12  
4/5 (escala de cinzentos)  
Tolerância: de 4 a 5

**Classe ignífuga**  
UNI 9174-8456 Class C1  
DIN 4102 Class B1  
NF 92501-7 Class M1  
BS 5852 Crib 5  
EN 1021-1  
EN 1021-2  
IMO Res. A 652 (16) Part 8  
IMO Res. A 471 (XII) Part 7  
BS 7176 Medium Hazard  
NF D 60013 Class AM 18

O grau de resistência ao fogo  
depende da espuma utilizada

**Cor**  
Poderão existir variações de cor entre  
os diferentes lotes dentro do padrão  
estabelecido comercialmente

**Manutenção e limpeza**



**Garantia**  
De acordo com termos e condições  
de garantia de fábrica.

**Composition**  
100% Polyester - Trevira CS  
The flame retardant properties are  
inherent to the fibre

**Weight**  
365 ± 5% g/ml  
260 ± 5% g/m<sup>2</sup>

**Width**  
140 ± 2% cm

**Abrasion resistance (Martindale)**  
UNI EN ISO 12947/2  
70.000 ± 10% rubs

**Pilling**  
UNI EN ISO 12945/2  
5 (standard photos)  
Tolerance: from 4 to 5

**Light fastness**  
UNI EN ISO 105-B02  
6 (blue scale)  
Tolerance: from 5 to 8

**Fastness to rubbing**  
UNI EN ISO 105-X12  
4/5 (grey scale)  
Tolerance: from 4 to 5

**Flammability**  
UNI 9174-8456 Class C1  
DIN 4102 Class B1  
NF 92501-7 Class M1  
BS 5852 Crib 5  
EN 1021-1  
EN 1021-2  
IMO Res. A 652 (16) Part 8  
IMO Res. A 471 (XII) Part 7  
BS 7176 Medium Hazard  
NF D 60013 Class AM 18

Flame retardant performance is  
dependant upon the foam used

**Colour**  
Batch to batch colour variations may  
occur within commercial tolerances

**Cleaning and washing**



**Guarantee**  
According to the factory's terms and  
conditions of guarantee.