

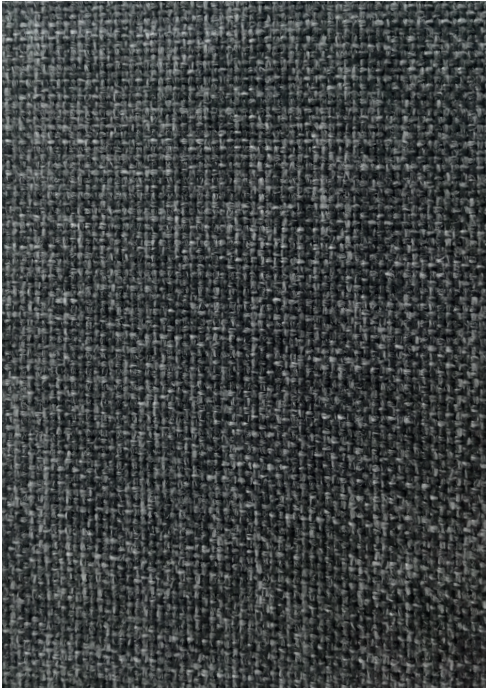
INNERE

**FAIAL**

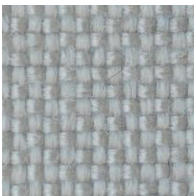
Tecido

*Fabric*

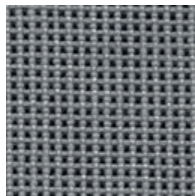
# FAIAL



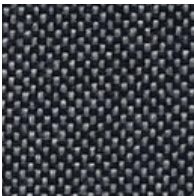
FERRO 01033001



BRUMA  
01033002



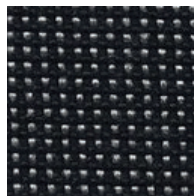
CASTELO  
01033003



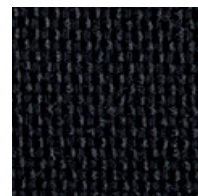
BASALTO  
01033005



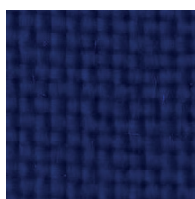
CINZA  
01033006



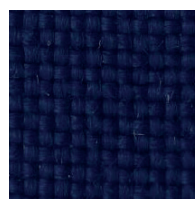
MATRIZ  
01033004



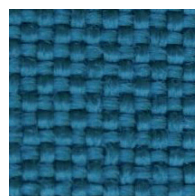
PRETO  
01033011



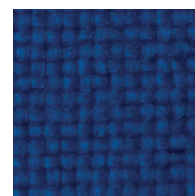
ATLÂNTICO  
01033009



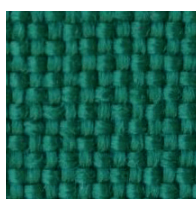
ANGRA  
01033010



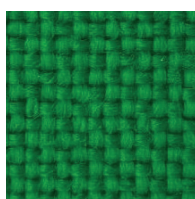
LAGOA  
01033007



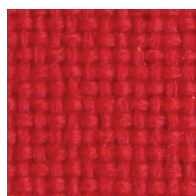
MAREZIA  
01033008



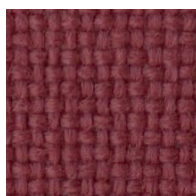
MONTANHA  
01033012



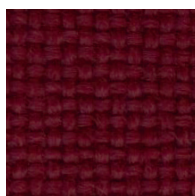
ERVA  
01033013



FOGO  
01033016



LAVA  
01033015



UVA  
01033014

Composição

100 % Polipropileno

Peso

230 g/m<sup>2</sup> ± 10 g/m<sup>2</sup>

Largura

143 cm ± 2 cm

Comprimento das peças

50 mL

Resistência à abrasão (Martindale)

EN 14465:2004 + A1:2007 (12k PA)

UNE EN ISO 12947-2

Nº de ciclos: >80.000

Borboto

ISO 12945/2 2001:5

Solidez à fricção

A seco: EN ISO 105-X12: 4/5

Molhado: EN ISO 105-X12: 4/5

Classe ignífuga

EN 1021-1:2006 (cigarro)

EN 1021-2:2006 (chama)

1 IM UNI 9175

BS 5852:2006 CRIB 5

Cor

Poderão existir variações de cor entre os diferentes lotes dentro do padrão estabelecido comercialmente

Manutenção e limpeza



IGNIFUGO

Composition

100 % Polypropylene

Weight

230 g/m<sup>2</sup> ± 10 g/m<sup>2</sup>

Width

143 cm ± 2 cm

Roll Length

50 mL

Abrasion resistance (Martindale)

EN 14465:2004 + A1:2007 (12k PA)

UNE EN ISO 12947-2

Rubs: >80.000

Pilling

ISO 12945/2 2001:5

Fastness to rubbing

Dry: EN ISO 105-X12: 4/5

Wet: EN ISO 105-X12: 4/5

Flammability

EN 1021-1 (cigarette)

EN 1021-2 (flamme)

1 IM UNI 9175

BS 5852:2006 CRIB 5

Colour

Batch to batch colour variations may occur within commercial tolerances

Cleaning and washing



FIREPROOF

Garantia

De acordo com termos e condições de garantia de fábrica.

Guarantee

According to the factory's terms and conditions of guarantee.