

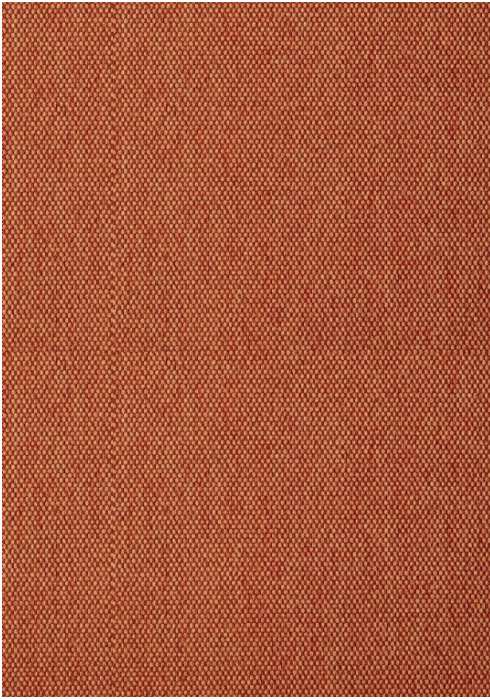
INNERE

MIRA

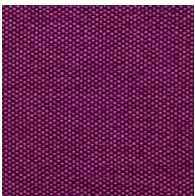
Tecido

Fabric

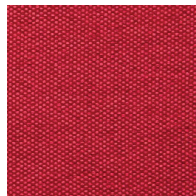
MIRA



LARANJA 01138008



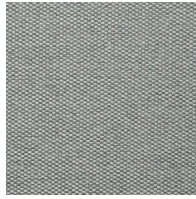
MALVA
01138012



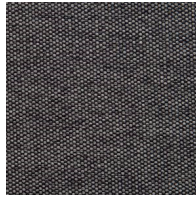
ROMÃ
01138007



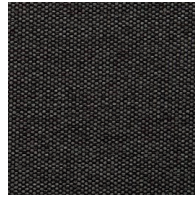
OCEANO
01138001



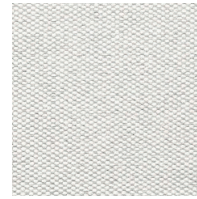
NEBLINA
01138013



GRANITO
01138014



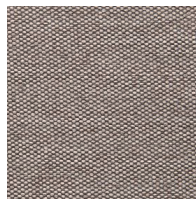
XISTO
01138015



BRANCO
01138002



PRETO
01138016



CAQUI
01138003



AVEIA
01138004



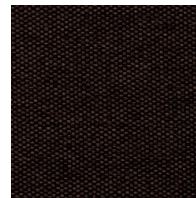
PALHA
01138005



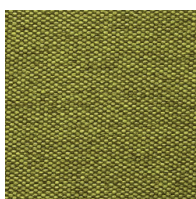
CARVALHO
01138006



MUSGO
01138010



ÉBANO
01138011



ABACATE
01138009

Composição
100 % Poliéster

Peso
300 g/m² ± 5 %

Largura
148 cm ± 2 cm

Comprimento das peças
50 mL

Resistência à abrasão (Martindale)
ISO 12947-2:1998+Cor.l:2002 (12k PA)
Nº de ciclos: > 100.000

Borboto
ISO 12947-2:1998+Cor 1:2002: 4/5

Solidez à fricção
A seco: ISO 105-X12:2001: 4/5
Húmido: ISO 105-X12:2001: 4/5

Classe ignífuga
ENI 1021-1:2006 (cigarro)
BS 5852:2006 CRIB 0

O grau de resistência ao fogo depende da espuma utilizada

Cor
Poderão existir variações de cor entre os diferentes lotes dentro do padrão estabelecido comercialmente

Manutenção e limpeza



Garantia
De acordo com termos e condições de garantia de fábrica.

Composition
100 % Polyester

Weight
300 g/m² ± 5 %

Width
148 cm ± 2 cm

Roll Length:
50 mL

Abrasion resistance (Martindale)
ISO 12947-2:1998+Cor.l:2002 (12k PA)
Rubs: > 100.000

Pilling
ISO12947-2:1998+Cor 1:2002: 4/5

Fastness to rubbing
Dry: ISO 105-X12:2001: 4/5
Wet: ISO 105-X12:2001: 4/5

Flammability
EN 1021-1:2006 (cigarette)
BS 5852:2006 CRIB 0

Flame retardant performance is dependant upon the foam used

Colour
Batch to batch colour variations may occur within commercial tolerances

Cleaning and washing



Guarantee
According to the factory's terms and conditions of guarantee.