

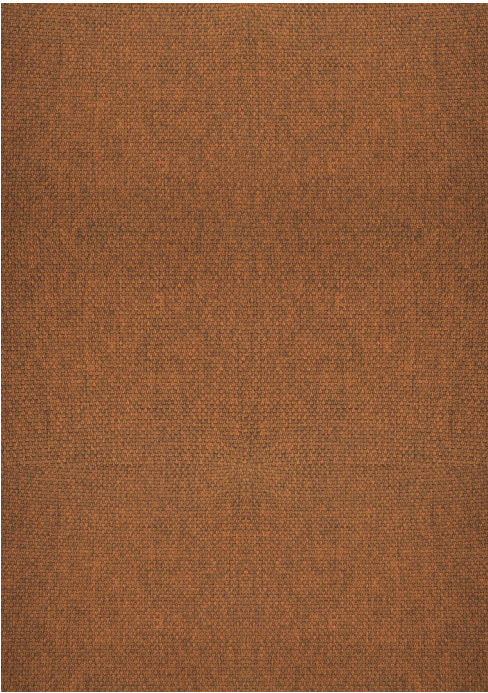
INNERE

SAGRES

Coleção Trevira CS

Trevira CS collection

SAGRES Trevira CS



01147005



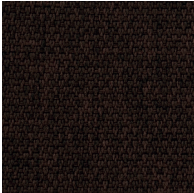
01147011



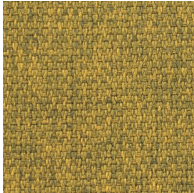
01147010



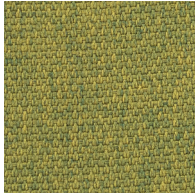
01147009



01147008



01147007



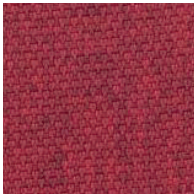
01147006



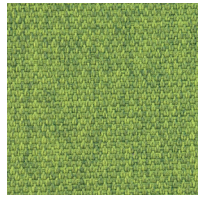
01147001



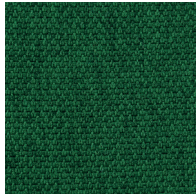
01147002



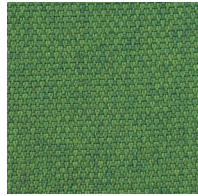
01147003



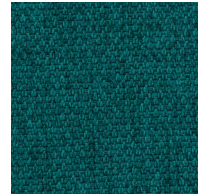
01147019



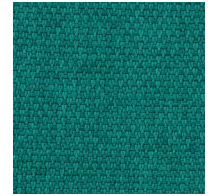
01147021



01147020



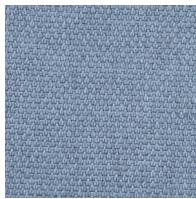
01147017



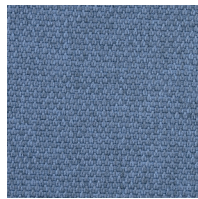
01147016



01147015



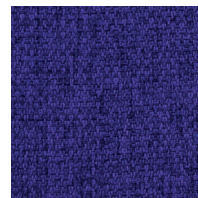
01147013



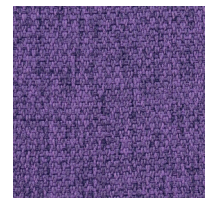
01147014



01147018



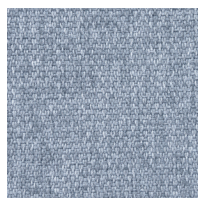
01147012



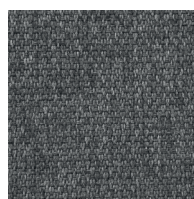
01147004



01147022



01147023



01147024



01147025



Composição
100% Poliéster - Trevira CS
As propriedades ignífugas são
intrínsecas à fibra

Peso
480 ± 5% g/ml
340 ± 5% g/m²

Largura
140 ± 2% cm

Resistência à abrasão (Martindale)
UNI EN ISO 12947/2
100.000 ± 10% ciclos

Borboto
UNI EN ISO 12945/2
5 (foto standard)
Tolerância: de 4 a 5

Solidez à luz
UNI EN ISO 105-B02
6 (escala de azuis)
Tolerância: de 5 a 8

Solidez à fricção
UNI EN ISO 105-X12
4/5 (escala de cinzentos)
Tolerância: de 4 a 5

Classe ignífuga
UNI 9174-8456 Class C1
DIN 4102 Class B1
NF 92501-7 Class M1
BS 5852 Crib 5
EN 1021-1
EN 1021-2
IMO Res. A 652 (16) Part 8
IMO Res. A 471 (XII) Part 7
BS 7176 Medium Hazard
NF D 60013 Class AM 18

O grau de resistência ao fogo
depende da espuma utilizada

Cor
Poderão existir variações de cor entre
os diferentes lotes dentro do padrão
estabelecido comercialmente

Manutenção e limpeza



Garantia
De acordo com termos e condições
de garantia de fábrica.

Composition
100% Polyester - Trevira CS
The flame retardant properties are
inherent to the fibre

Weight
480 ± 5% g/ml
340 ± 5% g/m²

Width
140 ± 2% cm

Abrasion resistance (Martindale)
UNI EN ISO 12947/2
100.000 ± 10% rubs

Pilling
UNI EN ISO 12945/2
5 (standard photos)
Tolerance: from 4 to 5

Light fastness
UNI EN ISO 105-B02
6 (blue scale)
Tolerance: from 5 to 8

Fastness to rubbing
UNI EN ISO 105-X12
4/5 (grey scale)
Tolerance: from 4 to 5

Flammability
UNI 9174-8456 Class C1
DIN 4102 Class B1
NF 92501-7 Class M1
BS 5852 Crib 5
EN 1021-1
EN 1021-2
IMO Res. A 652 (16) Part 8
IMO Res. A 471 (XII) Part 7
BS 7176 Medium Hazard
NF D 60013 Class AM 18

Flame retardant performance is
dependant upon the foam used

Colour
Batch to batch colour variations may
occur within commercial tolerances

Cleaning and washing



Guarantee
According to the factory's terms and
conditions of guarantee.